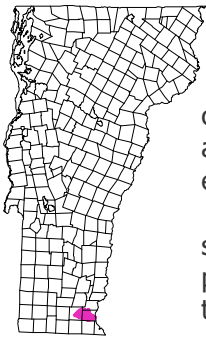


The Whetstone Brook Watershed

Brattleboro, Marlboro, and Dummerston, Vermont



The Whetstone Brook Watershed covers nearly 18,000 acres, or around 28 square miles, in south-eastern Vermont. Sixty-nine percent of the watershed is in Brattleboro, twenty-nine percent in Marlboro, and about two percent is in Dummerston.

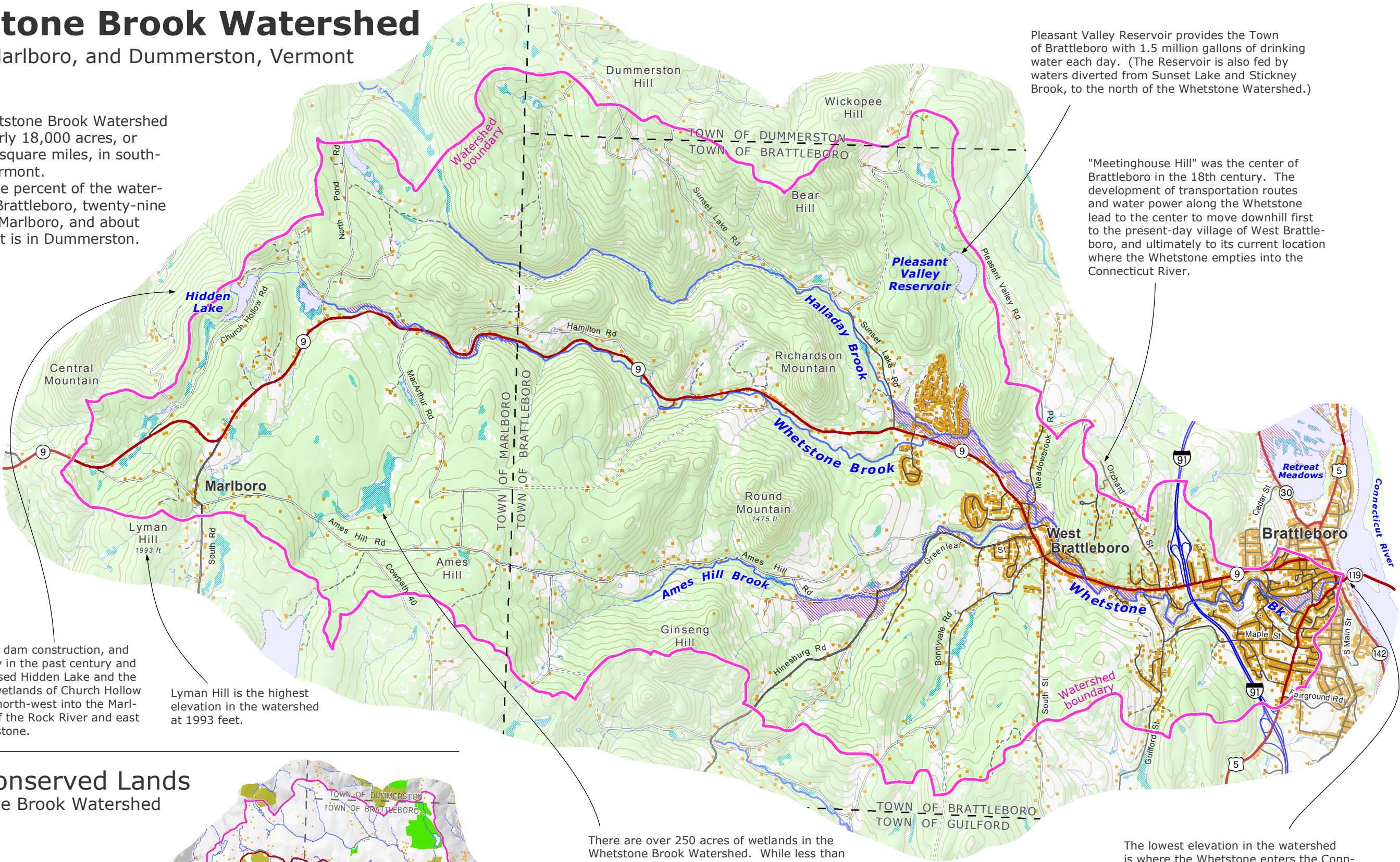
- watershed boundary
- stream
- lake or pond
- significant wetland
- floodplain
- woodland
- structures
- town boundary
- paved highways
- unpaved highways, roads, and drives
- 50-foot contours

Road building, dam construction, and beaver activity in the past century and a half has caused Hidden Lake and the streams and wetlands of Church Hollow to drain both north-west into the Marlboro Branch of the Rock River and east into the Whetstone.

Lyman Hill is the highest elevation in the watershed at 1993 feet.

Pleasant Valley Reservoir provides the Town of Brattleboro with 1.5 million gallons of drinking water each day. (The Reservoir is also fed by waters diverted from Sunset Lake and Stickney Brook, to the north of the Whetstone Watershed.)

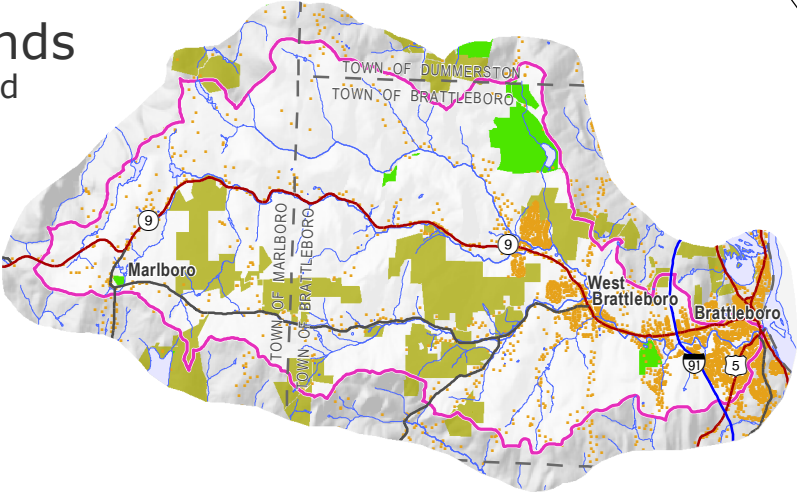
"Meetinghouse Hill" was the center of Brattleboro in the 18th century. The development of transportation routes and water power along the Whetstone lead to the center to move downhill first to the present-day village of West Brattleboro, and ultimately to its current location where the Whetstone empties into the Connecticut River.



Public and Conserved Lands in the Whetstone Brook Watershed

- Public land
- Conservation easement on private land

Though dense commercial and residential land uses occupy a significant portion of the lower reaches of the watershed, much of the watershed--about 17 percent--is protected from development. Conservation easements are held by the Vermont Land Trust on privately-owned farms and forests, while the Town of Brattleboro manages its land to insure a clean drinking water supply.



There are over 250 acres of wetlands in the Whetstone Brook Watershed. While less than one-third of the watershed lies in Marlboro, over 60 percent of the wetlands are found there.

The lowest elevation in the watershed is where the Whetstone enters the Connecticut River--148 miles from the River's mouth in Long Island Sound, yet only 220 feet above sea level.

